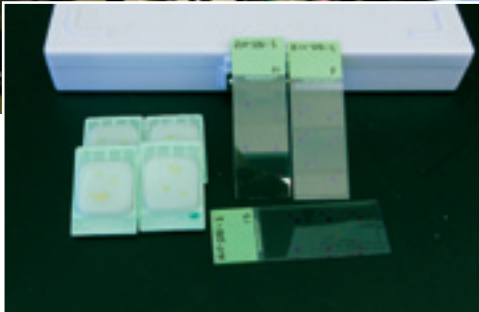
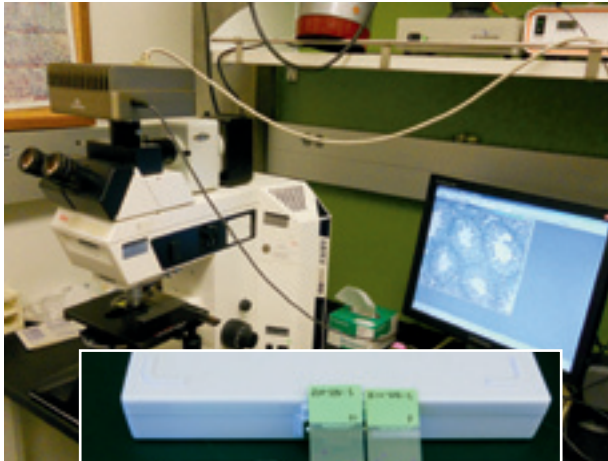


**For additional information  
about our services,  
please contact:**

**CRB Histology Core**  
Biotechnology Life Science Building 340W  
509-335-7079  
khkim@wsu.edu  
[crb.wsu.edu/corelaboratories/  
HistologyCore.html](http://crb.wsu.edu/corelaboratories/HistologyCore.html)



**Center for  
Reproductive Biology**

**Histology Core**

**WASHINGTON STATE  
UNIVERSITY**  
*World Class. Face to Face.*

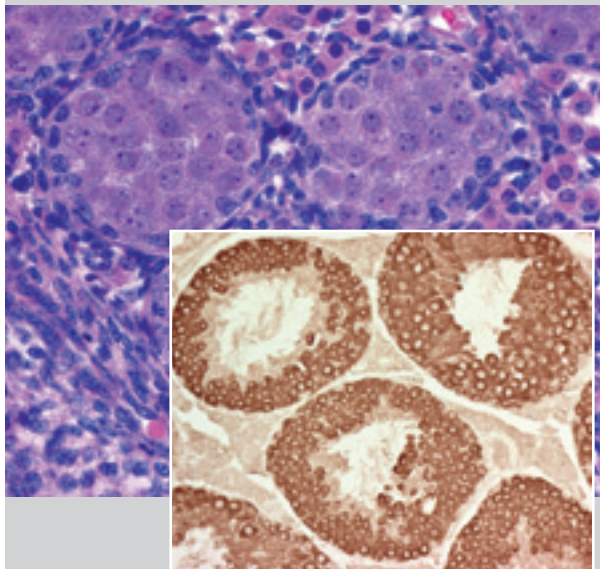


## Histology Core

Directed by Kwan Hee Kim in the School of Molecular Biosciences, the Histology Core provides centralized facilities, services, and expertise on histological methods and evaluations to the members of the Center for Reproductive Biology (CRB). The histopathology unit of the Washington Animal Disease Diagnostic Laboratory (WADDL) is integrated into the Histology Core, capitalizing on the expertise and efficiency of an established unit. A Core technician in the histopathology unit is responsible for embedding, cutting, and staining tissue sections. The core staff in the director's laboratory coordinates services and trains and consults with CRB researchers to develop individualized histological procedures. Histological projects are performed on a fee-per-specimen basis to cover the cost of supplies.

## Outline of Services

- Tissue section preparation (embed and cut) and staining
- Confocal microscope usage at the Franceschi Electron Microscopy and Imaging Center at the CRB member's rate
- Annual microscopy cleaning and maintenance service
- Maintenance of microscope and digital imaging facilities for training and consulting purposes



## Cost of Services

### **Histology Services are Charged on a Fee-per-Specimen/Reagent Basis**

CRB members have enjoyed a discounted fee schedule established in 1997 at 40% of the nonmember fee schedule. Since then, non-member fees have increased but CRB member fees have not. The CRB and WADDL have agreed to a graded fee increase over the next five years in 5% increments, eventually reaching 40% of the non-member fees.

In 2011-2012, paraffin embedding is priced at \$0.70, tissue block cut at \$1.90, H&E stain at \$1.20, and special stains at 25% of the non-member fees.