

## Contact Information

Derek Pouchnik  
509-335-1174  
dnaguy@mail.wsu.edu

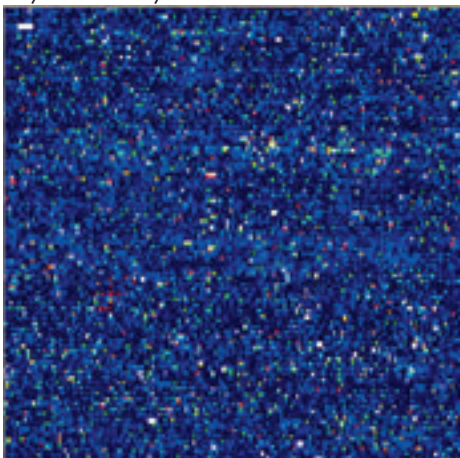
Mark Wildung  
509-335-1174  
wildung@wsu.edu

Gerhard Munske  
509-335-8670  
munske@wsu.edu

Wei Wei Du  
509-335-1174  
wdu@wsu.edu

Visit our website at  
[crb.wsu.edu/corelaboratories/  
molecularBiologyCore.html](http://crb.wsu.edu/corelaboratories/molecularBiologyCore.html).

*Affymetrix array Pseudocolor*



Center for  
Reproductive Biology

**Molecular Biology  
and Genomics Core**

WASHINGTON STATE  
UNIVERSITY  
*World Class. Face to Face.*



## Molecular Biology and Genomics Core

The WSU Molecular Biology and Genomics Core began in the early 1990s (originally named the Laboratory for Biotechnology and Bioanalysis). This core was established as a service center to provide access to instrumentation that was too expensive for individual labs to purchase. Over the past 20 years, with the assistance of the Center for Reproductive Biology, M.J. Murdock Charitable Trust, NIH, and others, the core lab has evolved into a state-of-the-art service facility.

The core lab is directed by Dr. Michael Griswold in the School of Molecular Biosciences and currently has four full time personnel. The facilities are housed in two laboratories in the Biotechnology and Life Sciences Building (rooms 127 and 227). We have a multitude of services and instrumentation available in the fields of molecular biology, genomics, and proteomics. If you have any questions about our services or facilities, please feel free to ask.

Sincerely,  
Derek Pouchnik  
Co-Director

## Outline of Services

We have many services and instruments, including the following:

- Affymetrix Microarrays (Affymetrix GeneChip workstation)
- Sanger Dye Deoxy DNA Sequencing (ABI 3730)
- DNA Fragment Analysis (ABI 3730)
- Next Generation Sequencing (454 Life Sciences and Ion Torrent PGM)
- Lab on a Chip (Agilent 2100 Bioanalyzer)
- NanoDrop ND1000 Spec.
- Mass Spectrometry and Proteomics (Bruker HTC-Ion Trap Mass Spec.)
- Accurate Mass Analysis (ABI Maldi-TOF/TOF)
- Peptide Synthesis
- Real Time PCR (2 ABI 7500 Fast)

## Cost of Services

We offer many services—please contact us for pricing information if it is not listed below.

- **Sanger Dye Deoxy Sequencing**
  - CRB \$3/reaction
  - Non-CRB \$7/reaction
- **Affymetrix Microarrays**
  - Cost of arrays plus up to \$150 for sample processing
  - Contact Derek Pouchnik for array cost
- **DNA Fragment Analysis**
  - \$1/well
- **Next Generation Sequencing**
  - Please contact Mark Wildung
- **Lab on a Chip**
  - High sensitivity DNA chip and RNA pico chip starting at \$40/chip

For all mass spectrometry, peptide synthesis, and HPLC please contact Gerhard Munske.